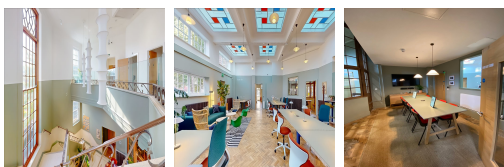


Serviced Office Space UK

Queen Victoria Road

High Wycombe HP11 1BG



This centre is located in the heart of High Wycombe, placing tenants and their teams in a well-connected and easily accessible location. The nearest bus stop and train stations are just a few minutes away from the office space and are by several bus and train routes that make it comfortable to get to the office at the right time every day. Many things are within walking distance, like hotels, shopping malls, restaurants, and other business circles, with all kinds of living facilities, one step, and proximity to prosperity and benefits.

The workspace offers a modern working office space with all the required instruments for seamless working, such as secured access, fast internet access, phone booth access, a fully air-conditioned workspace, a printing and scanning facility and dog-friendly service available to all users. This business centre has the latest technical technology, state-of-the-art meeting facilities, and excellent business services supported by a team of professionals. Elegant lighting, modern furniture, flooring, and services like beverages and kitchen are in-house so members can work to their fullest potential.

transport links

Underground	N/A
Train Station	High Wycombe
Road Link	N/A
Airport	Heathrow Airport

Virtual Office

- **Price** : Â£30 pcm
- **Min Price** : Â£30 pcm
- **Min Term** : 3 mnths
- **Max Term** : 24 mnths