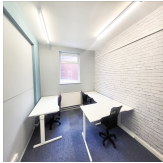
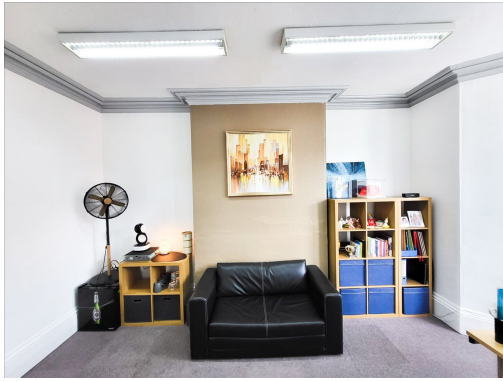


Serviced Office Space UK

Curzon Street

Burton Upon Trent DE14 2DH



The workspace is situated in the heart of Burton upon Trent, placing tenants and their teams in a well-connected and easily accessible location. Conveniently located between the town hall and the railway station and is a five-minute walk from the centre. The regional transport links are excellent and provide all prospective tenants with a range of frequent and convenient services throughout the area. The city centre provides a variety of local amenities right on the doorstep, including bars, restaurants, cafes and fast-food options.

This building is a wonderland for all things digital – providing an ever-expanding hub of creatives with never-ending networking opportunities. This centre offers office accommodation and light storage unit facilities. This accommodation is accessed via an entrance lobby. The rent is fully inclusive except for business rates and telephone lines. There is ample parking for staff and visitors. The centre is accessible 24 hours a day so the clients can work flexibly. This recently refurbished centre provides an excellent platform for any business to flourish with its cost-effective workplace solutions.

transport links

Underground	SUBWAY Derby
Train Station	Burton-on-Trent
Road Link	M38
Airport	East Midlands Airport

Serviced Offices

- **Price** : Â£150 pcm
- **Min Price** : Â£150 pcm
- **Min Size** : 1 wkstns
- **Max Size** : 8 wkstns
- **Min Term** : 12 mnths
- **Max Term** : 999 mnths