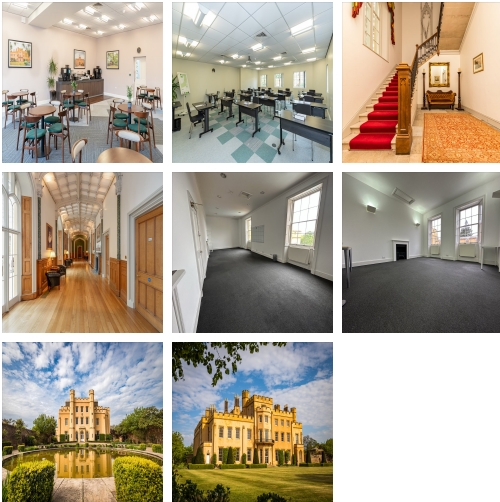


Serviced Office Space UK

Slough SL3 7JB



This venue is surrounded by a centuries-old moat and situated within beautifully manicured gardens in the gorgeous Berkshire countryside located on the fringes of Slough and just off the J5 of the M4. Transport links like buses and trains are available to commute to the centre. The proximity of the office space to the airport makes the office space one of the prime spaces as the centre is 4.8 miles from Heathrow Airport. Members can reach the airport by vehicle in 9 minutes and by public transport in well under 32 minutes. Many restaurants, cafes, shopping centres, and other local amenities are close to this centre.

This workspace is unique in the area of Slough. The members make their way over the moat to the centre, with ample complimentary parking on the secured site, which has 24-hour manned security. The ground floor of the centre comprises a large reception area with a selection of meeting rooms in various sizes. The 1st and 2nd floor is where the offices are, and can be reached via the grand staircase or lift. On the other side of the pond, this workspace also offers a large conference room. Also, on the grounds, tenants have a large marquee for conferencing and events with a maximum capacity of 1000 delegates in theatre style.

transport links

Underground	Uxbridge Underground Station
Train Station	Langley
Road Link	M4/J5
Airport	Heathrow Airport

Serviced Offices

- **Price** : Â£250 pcm
- **Min Price** : Â£250 pcm
- **Min Size** : 4 wkstns
- **Max Size** : 15 wkstns
- **Total Size** : 172 wkstns
- **Min Term** : 3 mnths
- **Max Term** : 12 mnths