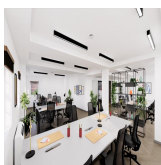


# Serviced Office Space UK

---

## 52 George Street

London W1U 7DY



This workspace boasts a prime location in central London's most desirable area, offering easy access to Bond Street, Marble Arch, Baker Street, and Marylebone through multiple modes of transportation. Clients can reach their destination via buses, tube trains and taxis or private cars. It's also just 8 minutes away from the serene greenery of The Regent's Park. The convenience of the location and the plethora of options for leisure and dining make it an ideal choice for seeking a place to work in a bustling and vibrant neighbourhood.

This office space offers a range of contemporary, fully-fitted accommodation options spread over four floors. This building is perfect for bringing together teams of any size, featuring a unique open-plan design to encourage collaboration along with meeting rooms, a self-contained office, and breakout areas. The self-contained floors also include everything one needs, from furnished workstations and meeting rooms to fibre and server racks and ample break-out space. The building also benefits from large windows and excellent natural light so, with a professional and formal tone, this office space is ideal for companies looking for a sleek and well-equipped workspace.

### transport links

<b>Underground</b>	Bond Street
<b>Train Station</b>	Oxford Circus Underground Station
<b>Road Link</b>	N/A
<b>Airport</b>	London City Airport

### Serviced Offices

---

- **Price** : Â£1109 pcm
- **Min Price** : Â£1109 pcm
- **Min Size** : 30 wkstns
- **Max Size** : 40 wkstns
- **Total Size** : 100 wkstns
- **Min Term** : 24 mnths
- **Max Term** : 36 mnths