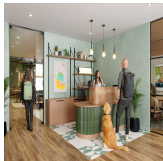
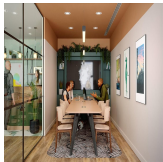


Serviced Office Space UK

24-28 Bloomsbury Way

London WC1A 2SN



Located in the buzzing city of London, this workspace is a prime spot for entrepreneurs and businesses in the technology industry. With an array of upscale restaurants and shops surrounding it, this workspace offers a perfect blend of work and play. Being situated in the heart of the city, it provides easy access to public transportation such as metro stations, buses, and trains. In conclusion, this workspace provides a professional and affordable launchpad for teams seeking a well-connected and convenient space to work in.

This modern centre provides a professional and productive work environment for businesses across industries. With a keen emphasis on amenities and accessibility, each area of the space has been crafted carefully to ensure maximum efficiency and safety. The centre provides a range of high-quality and well-equipped meeting and conference facilities, perfect for all business meetings. Technical supports executive availability along with housekeeping staff and makes this space a place to work without the hassle of keeping the office space in order. The premises are guarded by security round the clock and provide ample parking space.

transport links

Underground	Holborn
Train Station	Tottenham Court Road
Road Link	N/A
Airport	London City Airport

Serviced Offices

- **Price** : Â£495 pcm
- **Min Price** : Â£495 pcm
- **Min Size** : 1 wkstns
- **Max Size** : 800 wkstns
- **Total Size** : 800 wkstns
- **Min Term** : 1 mnths
- **Max Term** : 98 mnths