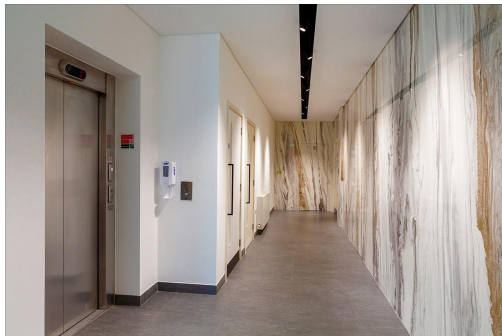


Serviced Office Space UK

Rochester Mews

London NW1 9JB



The centre is located in the heart of the city and is well-known for its transport system, which provides an easy and efficient means of transport for members. There are various public transport options, including buses, taxis, and trains. Moreover, the centre is close to London City Airport, which is 8.5 miles away from the business centre. With an abundance of hotels, restaurants, parks, and hospitals within proximity, employees can enjoy all necessary services and amenities. The centre allows the clients to make short-distance travel quickly and easily.



This collaborative workspace has everything for a business professional or a team. This flex office space offers a mix of offices and more. The members also get access to modern meeting rooms and fully equipped workspaces that offer the best work experience. Additionally, the workspace provides attractive common areas like a business lounge and cafe where professionals can interact, create new connections, or do various team-building sessions. Some of the various amenities that the workspace offers include access to a fully equipped pantry, and the workspace is available 24 hours a day so that members can work flexibly.

transport links

Underground	Camden Town
Train Station	St Pancras International
Road Link	N/A
Airport	London City Airport

Serviced Offices

- **Price** : Â£591 pcm
- **Min Price** : Â£591 pcm
- **Min Size** : 22 wkstns
- **Max Size** : 36 wkstns
- **Total Size** : 58 wkstns
- **Min Term** : 12 mnths
- **Max Term** : 60 mnths