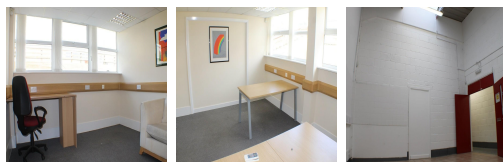


Serviced Office Space UK

1-6 Barton Road

Milton Keynes MK2 3HU



Located south of Milton Keynes near Bletchley, this centre provides excellent access to the A5. Within short distance to cafes, restaurants and supermarkets, Bletchley Business Campus is surrounded by a mixed variety of industries making it an essential destination for business.

This business centre is a modern serviced offices development ideal for all companies ranging from a 1-person start-up to blue-chip multinationals looking for an instant, flexible solution to house 200 staff for a special project. The development comprises a range of 110 quality modular offices ready for immediate occupation, all of which are available to rent or lease with instant access and only a rolling month commitment. Workshops and industrial space are also available. EPC Rating D.

transport links

Underground	N/A
Train Station	Bow Brickhill
Road Link	N/A
Airport	London Luton Airport

Leased Spaces

- **Price** : Â£2 pcm
- **Min Price** : Â£2 pcm
- **Min Size** : 1 sq ft
- **Max Size** : 25 sq ft
- **Total Size** : 77000 sq ft
- **Min Term** : 3 mnths
- **Max Term** : 60 mnths