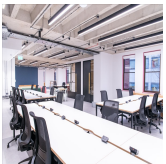
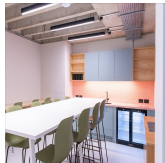
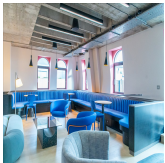
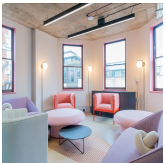


Serviced Office Space UK

6 Wrights Lane

London W8 6TA



Set across six floors with five private managed suites located on separate floors and club membership available in our communal areas, this hub is ideal for independent companies, smaller teams and freelancers looking for a space to call their own within a beautiful shared building complete with enviable amenities. Huckletree Kensington is primely positioned in one of London's most sought after neighbourhoods. Located 2 minutes walk from from High Street Kensington with direct access to Victoria Station, this hub is perfect for companies looking for beautifully designed workspace with a local neighbourhood feel and quick links to Central London.

Set across six floors with five private managed suites located on separate floors and club membership available in our communal areas, this hub is ideal for independent companies, smaller teams and freelancers looking for a space to call their own within a beautiful shared building complete with enviable amenities.

transport links

Underground	High Street Kensington
Train Station	Charing Cross Station
Road Link	N/A
Airport	London City Airport

Coworking Spaces

- **Price** : Â£1100 pcm
- **Min Price** : Â£1100 pcm
- **Total Size** : 150 wkstns
- **Min Term** : 3 mnths
- **Max Term** : 2 mnths