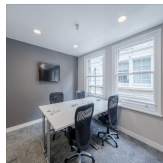
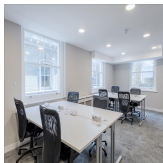


# Serviced Office Space UK

---

## 9 George Square

Glasgow G2 1DY



Packed with history, 9 George Square is one of Glasgow's most iconic and centrally located buildings that was once known as the McLaren warehouse. We personally love the B-listed, Chicago School style façade which is in keeping with this Operators infamous period style of product. The building totals just under 22,000sqft, and offers office space to accommodate 1-100+ people across three floors. Key amenities include; breakout space, meeting rooms, bike storage, showers and onsite car parking.

9 George Square is a prominent landmark listed building overlooking George Square and conveniently located in the centre of Glasgow's central business district. This prestigious address offers great connectivity to local transport routes with Queen Street station just 2 minutes away and Central Station just 5 minutes. With beautiful views over the square, this location offers flexible workspace containing private serviced offices, meeting rooms and plenty of amenities including on-site parking, breakout space, bike storage, and more. 9 George Square is the perfect location for businesses looking for a premium flexible office space with great transport links in the very heart of Glasgow.

### transport links

<b>Underground</b>	Buchanan Street SPT Subway Station
<b>Train Station</b>	Queen Street
<b>Road Link</b>	N/A
<b>Airport</b>	Glasgow Airport

### Serviced Offices

---

- **Price** : £410 pcm
- **Min Price** : £410 pcm
- **Min Size** : 1 wkstns
- **Max Size** : 100 wkstns
- **Total Size** : 337 wkstns
- **Min Term** : 3 mnths
- **Max Term** : 24 mnths