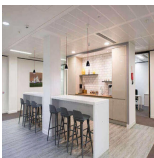
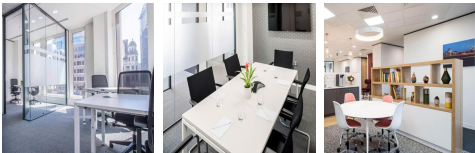


Serviced Office Space UK

Homer Close

Royal Leamington Spa CV34 6TT



Participate in a local economy enriched with retail and digital enterprises, while operating from the renowned Tachbrook Business Park. Establish a business in a well-connected location, merely 4km from the bustling town of Warwick and approximately 20km from Coventry city centre, with junction 13 of the M40 offering direct routes. Utilize flexible office space that can be expanded according to requirements and take advantage of convenient lunch options available at nearby Leamington Shopping Park. After work, venture to the heart of Royal Leamington Spa, just 3km away, to explore local restaurants and attractions.

Transition enterprise to the heart of the Midlands with premium business park office space at Nicholls House in Royal Leamington Spa. Elevate professional presence with the option of business-ready private offices or collaborative coworking spaces at Nicholls House. Impress visiting clients with the distinguished ambiance of a tall corporate building adorned with a striking blue façade and meticulously landscaped gardens. Benefit from top-tier amenities including business-grade WiFi and comprehensive facilities support, ensuring seamless operations. Easily schedule and manage meetings with flexible meeting room options, effortlessly accessible through the user-friendly Regus app. Foster connections and collaboration with colleagues in the inviting atmosphere of kitchen-breakout areas, thoughtfully designed with comfortable seating to facilitate productive lunch breaks and informal discussions.

transport links

Underground	N/A
Train Station	Leamington Spa
Road Link	N/A
Airport	Coventry Airport

Virtual Office

- **Price** : £75 pcm
- **Min Price** : £75 pcm
- **Min Term** : 24 mnths
- **Max Term** : 999 mnths