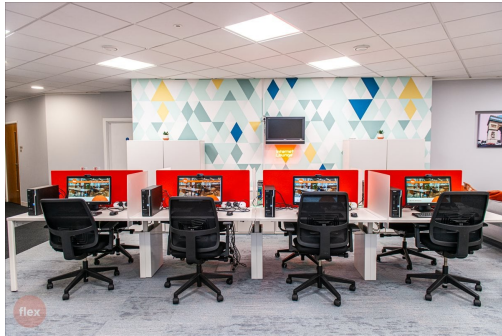


# Serviced Office Space UK

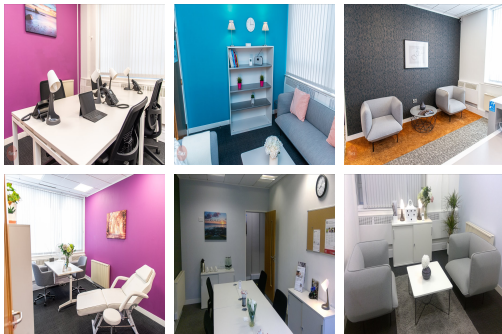
---

## Norwich House

### Hull HU13ES



Only 5 minutes walk from the major transport Hull is Norwich House . Over looking , with stunning views the cities historic Queens Gardens and recently renovated Maritime Museum , Flex Workspaces occupies the first two floors of the building . On street parking right outside and a multistorey parking facility a few hundred yards away , onsite cycle storage means that getting to us is a breeze . when you are ready for a hard earned break within 2 mins walk are most high street food brands and a small Tesco express



At Flex Workspaces LTD we have built on years of experience working under a major PLC and came to understand the frustrations suffered by start ups by removing those barriers and priding ourselves on being flexible with slow start rentals , low deposits and flexible contracts we have become more robust in a challenging market . Our on site team are available to discuss and challenges and support our community face to face rather than via an off shore call centre . We have an eclectic mix of rooms to rent by the hour , day , week , month or beyond . We now boast pop-up sweet shops and beauty treatments on site , teams this with the friendly atmosphere and great coffee makes Flex Workspaces a great place to be .

### transport links

<b>Underground</b>	N/A
<b>Train Station</b>	First Hull Trains
<b>Road Link</b>	A63
<b>Airport</b>	Humberside Airport

### Coworking Spaces

---

- **Price** : Â£99 pcm
- **Min Price** : Â£99 pcm
- **Total Size** : 10 wkstns
- **Min Term** : 1 mnths
- **Max Term** : 36 mnths