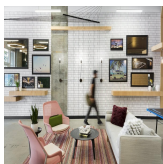
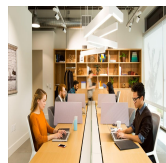
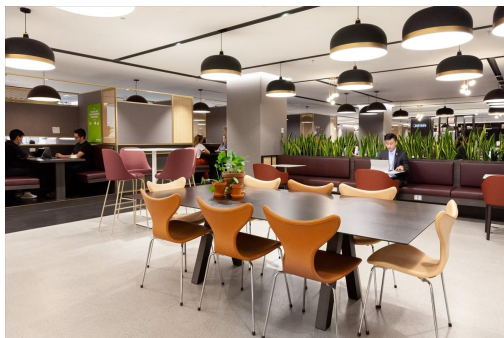


Serviced Office Space UK

Northway House

London N1 1RU



Located at Highbury & Islington in London, this flexible office space sits at the heart of North London's vibrant community, renowned for its excellent transport links and diverse character. Just a two-minute walk from Highbury & Islington station and 14km from London City Airport, this prime location offers easy accessibility, ideal for networking and client meetings. The surrounding area features numerous cafés, restaurants, live music venues, theatres, and gyms, ensuring a positive work-life balance for both employers and employees.

Expand business potential with a spacious workspace designed for growth. Collaborate with like-minded professionals at Highbury & Islington, a vibrant London office located in a bustling area. Experience the dynamic environment of modern meeting rooms where fresh ideas come to life. Benefit from open-plan coworking areas, two communal breakout rooms, and four floors of well-equipped office space, supported by a dedicated on-site team. Enjoy a hot drink at the designated tea point, then unwind on the 2nd-floor roof terrace. After work, visit Highbury Fields, one of Islington's largest open spaces, ideal for recreation and outdoor activities.

transport links

Underground Train Station	Highbury & Islington St Pancras International
Road Link	N/A
Airport	London City Airport

Virtual Office

- **Price** : Â£105 pcm
- **Min Price** : Â£105 pcm
- **Min Term** : 24 mnths
- **Max Term** : 999 mnths