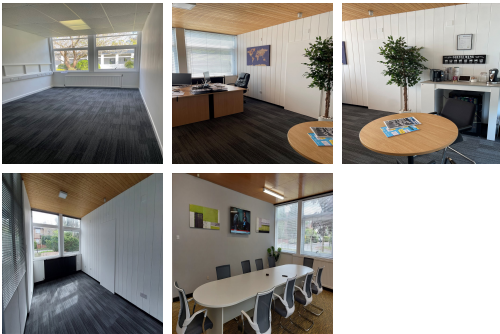


# Serviced Office Space UK

---

## Lynchborough Road

### Liphook GU30 7SB



Located near Liphook in Hampshire, this centre is 10 minutes from the A3 with fast connections to the M25 and the mainline railway service to London Waterloo, which takes approximately 1 hour. It offers fantastic transport links to central London and beyond in only 1 hour. The centre has easy access to the M25. Additionally, it also has access to Portsmouth cross-channel services. The surrounding area of the centre has several shops and a hotel, ideal for visiting clientele. Complementary parking is available for all tenants.

This centre offers a choice of office, storage and some light industrial units, with amenity space and extensive car parking. Office units range from 180 to 600 square feet. A refurbishment program is currently in place to include new LED lighting, blinds and carpet for offices. There are approachable and amenable on-site staff who take care of any day-to-day needs, communal kitchen and toilet facilities. A meeting room is also available to tenants. The centre is a dog-friendly environment to bring their pets to work or require guide dog assistance. The space has 24/7 access coverage for robust security measures.

### transport links

<b>Underground</b>	N/A
<b>Train Station</b>	Liphook
<b>Road Link</b>	M3 Jct 5
<b>Airport</b>	Farnborough Airport

### Leased Spaces

---

- **Price** : Â£1 pcm
- **Min Price** : Â£1 pcm
- **Min Size** : 2 sq ft
- **Max Size** : 2 sq ft
- **Total Size** : 1348 sq ft
- **Min Term** : 1 mnths
- **Max Term** : 12 mnths