

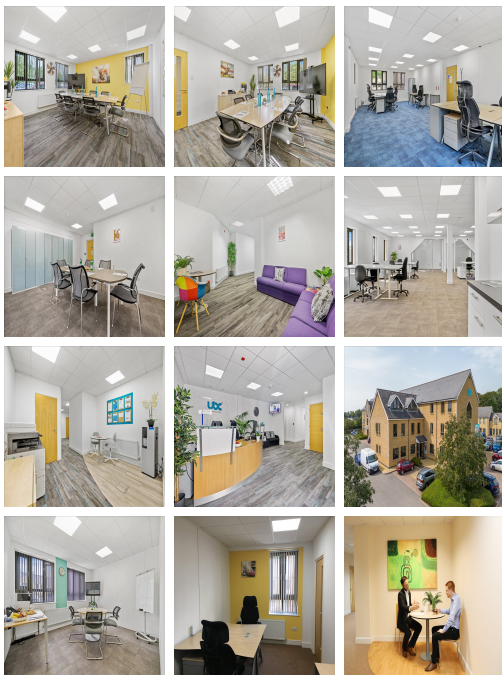
# Serviced Office Space UK

## Tetbury Road

Cirencester GL7 6JJ



This business centre is in the heart of Cirencester Town Centre, opposite the Agricultural College and within walking distance of the centre of this attractive Cotswolds town, which offers a selection of shops, bars and restaurants. Swindon and Cheltenham are only 20 minutes away, and Kemble railway station is 3 miles from the centre. Located off the A417 Cirencester bypass, with easy access to the M5 and M4, London is only 75 minutes away by train. Fantastic transport links are available due to the central location of this space.



This fully serviced accommodation with an on-site award-winning customer service team is a short walk from Cirencester Town Centre. This centre provides office space from 150 to 1000 square feet in a superbly presented building on a prestigious development totalling 15000 square feet. Car parking for staff and visitors is next to the building. Prestigious fully furnished serviced office suites give a comfortable, vibrant working environment with additional services, including access to co-working, meeting rooms and boardrooms and full reception admin support. Some self-contained suites are available with a built-in kitchen.

### transport links

<b>Underground</b>	N/A
<b>Train Station</b>	Kemble
<b>Road Link</b>	M4 Junction 16
<b>Airport</b>	Cotswold Airport

### Virtual Office

- **Price** : Â£45 pcm
- **Min Price** : Â£45 pcm
- **Min Term** : 3 mnths
- **Max Term** : 12 mnths