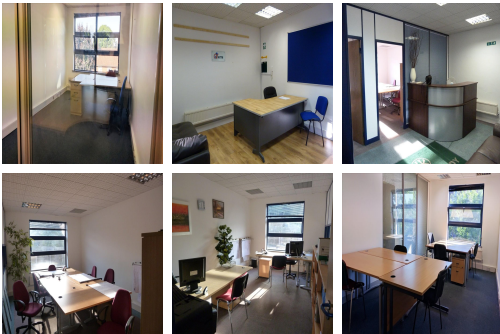


Serviced Office Space UK

297-303 Edgware Road

London NW9 6NB



The business centre is located on Edgware Road, Colindale, on the A5 in Colindale Town Centre approximately seven miles North West of Central London. Around a 15-minute walk away is Colindale Underground Station which has Northern Line services. The M1, M25 and North Circular Road are within easy reach, making the centre very accessible by car. A number of buses pass from outside Watling Gate, further enhancing public transport links, and Heathrow Airport is also very easy to reach from this property.

The offices are on the main Edgware Road with excellent public transport, as several buses run from outside. The building has been refurbished to a very high standard, and an office with one workstation, will be from £350.00 + VAT per month which includes rent, light and heat, service charge and building insurance, so there are no monthly surprises. This space has a secured car park and the cost of Parking is £50+ VAT per car, great for commuters not using public transport. The centre has offices from a single workstation to 15 workstations ready to be occupied, suitable for a number of business requirements.

transport links

Underground	Colindale Station
Train Station	Euston Station
Road Link	N/A
Airport	Heathrow Airport

Serviced Offices

- **Price** : £300 pcm
 - **Min Price** : £300 pcm
 - **Min Size** : 1 wkstns
 - **Max Size** : 20 wkstns
 - **Total Size** : 200 wkstns
-