

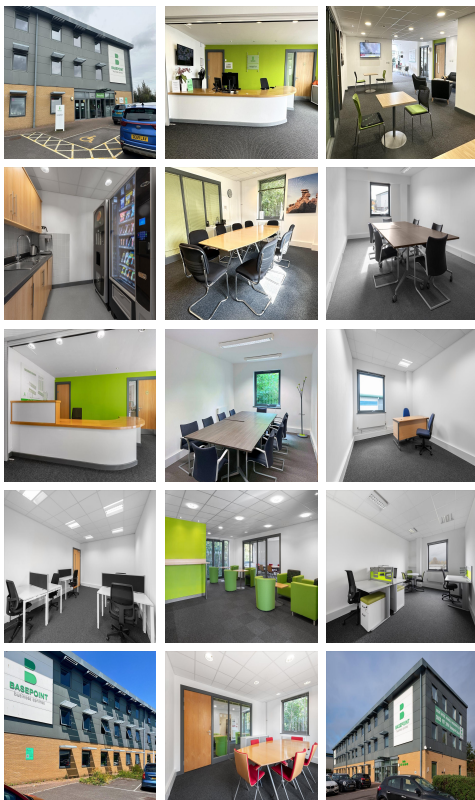
Serviced Office Space UK

Yeoford Way

Exeter EX2 8LB



This centre is located on Marsh Barton Trading Estate, Yeoford Way, it is 15 minutes by car from Exeter city centre, 5 minutes from major motorway routes the M5 , A38 and A30. The space is a five minute walk to the park and ride, with buses running directly into the city centre. Just a 15 minute taxi journey from St Thomas local railway station or a 20 minutes journey from Exeter St David's Mainline Station, there are great transport links, and travel further afield is possible from the nearby Exeter International Airport.



Established Business Centre located on the Marsh Barton Trading Estate in Exeter; a rapidly expanding commercial hub. The centre offers private offices which can accommodate 1 -20 persons, along with self contained studio workshops. The spaces are ideal for companies of all sizes, seeking affordable and highly-functional serviced office space. The space is accessible to clients on a 24-hour basis; with a manned reception during business hours offering a positive first impression for your clients and face to face assistance for your business. There is free onsite parking available and a café. Meeting Rooms are available for hire by the hour, half day or full day, which can be utilised by licensees and non licensees, with an online booking service. Each of the three levels has its own WC and kitchen facilities. There is also a breakout area on the ground floor for relaxation or a quick informal meeting. The centre holds regular networking events a great chance to share skills with your fellow licensees and promote your business.

transport links

Underground	N/A
Train Station	Exeter St Thomas
Road Link	N/A
Airport	Exeter International Airport

Virtual Office

- **Price** : Â£99 pcm
- **Min Price** : Â£99 pcm
- **Min Term** : 24 mnths
- **Max Term** : 999 mnths