

Serviced Office Space UK

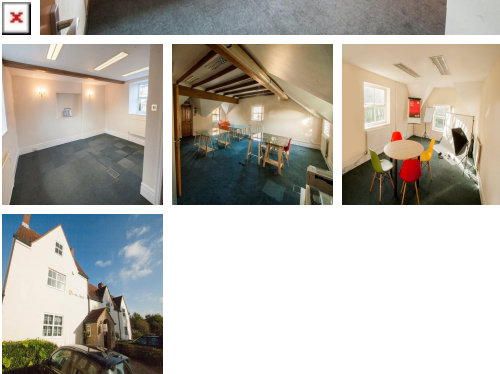
Great Park Road

Bradley Stoke BS32 4QW



The office has easy access to M4/M5 motorway's and is a close proximity to Parkway Train station.

The office is based in one of the original Farm house's on Almondsbury Business Park. It retains many of the original character features. The office is approximately 2000 sq ft, available on a flexible sublease from 3 months. The office is unfurnished and comes with car parking (although we do have some desks available if required). The space comprises of a small kitchen area, one large office to the rear of the building with either 2 or 3 further smaller offices to the front of the building dependent of your space requirement. There is a further office available on the Second floor at approximately 300 sq ft if required. The space comes with a small storage cupboard and both Male and Female WC facilities. Individual office spaces include: 17ft x 17ft 4 inches 16ft 8 inches x 17ft 4 inches 15ft 10 inches x 8ft 10inches 17ft 4 inches x 14ft 1 inch 28ft 6 inches x 23ft 7 inches



transport links

| | |
|----------------------|-----------------|
| Underground | N/A |
| Train Station | Patchway |
| Road Link | N/A |
| Airport | Bristol Airport |

Sublet Office Spaces

- **Price** : Â£1 pcm
- **Min Price** : Â£1 pcm
- **Min Size** : 1 wkstns
- **Max Size** : 1 wkstns
- **Min Term** : 1 mnths
- **Max Term** : 2 mnths