

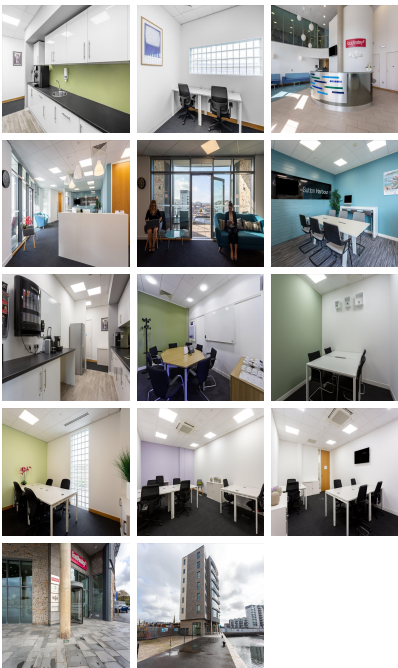
Serviced Office Space UK

6 North East Quay

Plymouth PL4 0HP



Sutton Harbour Marina enjoys a unique location alongside Plymouth's widely celebrated and historic Barbican and in close walking distance of Plymouth Hoe and the central part of the city, including Drake Circus Shopping Centre. It offers a wide selection of professional serviced office options, catering for a variety of businesses while overlooking Sutton Harbour, with views reaching to Plymouth Hoe. Acknowledged to be one of the vibrant and dynamic commercial and residential areas within the City, Sutton Harbour is destined to become the most desirable location for living and working in Plymouth; contributing millions to the local economy. The waterfront location only serves to enhance the cosmopolitan environment and ambiance for live work activities set within the Harbour; now further strengthened by the iconic visual statement of this centre. Mainline rail services are provided on a regular basis from Plymouth to London Paddington with a journey time of approximately three hours. As well as Exeter International Airport, the city airport also provides both domestic and international flights with a daily service to London Gatwick. Plymouth is also acknowledged to be a major port, offering both passenger and vehicle services currently run by Brittany Ferries.



The centre provides a wide range of business facilities in addition to the professional fully-serviced office space, including; fully-equipped meeting and conference rooms, access to a walk-in business lounge, plus virtual office options - mail handling, business address and telephone answering. This space offers all-inclusive pricing, so you can move in with peace of mind that there will be no unexpected costs each month. If flexible working is required, this is no problem as tenants can access the centre 24-hours a day. For those commuting by car, parking is easy with the spaces available on-site.

transport links

Underground	N/A
Train Station	Plymouth
Road Link	N/A
Airport	Mylesmoor travel

Virtual Office

- **Price** : Â£69 pcm
- **Min Price** : Â£69 pcm
- **Min Term** : 24 mnths
- **Max Term** : 999 mnths