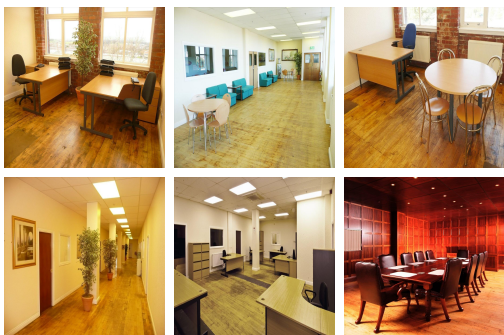


# Serviced Office Space UK

---

## Arrow Mill

Rochdale OL11 2YW



This business centre is situated in Castleton, Rochdale, with excellent transport links. Castleton Train Station is just a five minute walk from the building. There are excellent public transport links to local towns such as Heywood, Oldham, Bury and Middleton, as well as to Manchester city centre. It is also just a two minute drive from Junction 20 of the M62, ready to serve the whole of Greater Manchester, Yorkshire and beyond. Manchester Airport is easily accessible by both road and public transport.

This Grade II Listed old cotton mill houses a variety of fully serviced offices, in a range of sizes and configurations to suit the needs of most businesses. Flexible Licences to Occupy are offered at competitive prices, within a modern working environment that also retains a great deal of its original character. Meeting rooms, management support, fast broadband access and kitchen facilities are all offered. So whether you are looking to rent 100 sq ft or over 5,000 sq ft we are confident of finding your business the right size office space to let here in Rochdale without it hurting your bank account. For peace of mind, the site has 24-hour security.

### transport links

<b>Underground</b>	N/A
<b>Train Station</b>	East Lancashire Railway
<b>Road Link</b>	M62 J20
<b>Airport</b>	City Airport Ltd

### Serviced Offices

---

- **Min Size** : 1 wkstns
- **Max Size** : 20 wkstns
- **Min Term** : 3 mnths
- **Max Term** : 24 mnths