

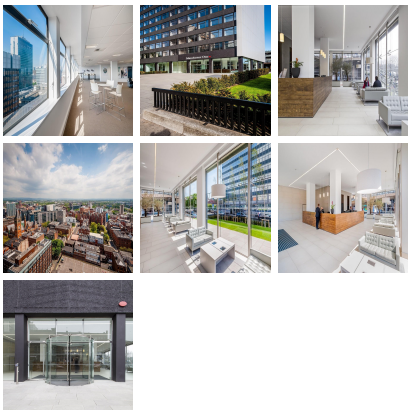
# Serviced Office Space UK

---

## Manchester M1 3LD



Just minutes from both Piccadilly and Oxford Road train stations and close to Piccadilly Gardens transport interchange Manchester One has fantastic public transport links. Portland Street runs from the centre of Manchester to the southern corridor of Oxford Road and the city's 'University Quarter'. Manchester's central shopping district is a five minute walk away as is China Town, King Street and Deansgate. There are a range of bars, restaurants and cafes in the local area, perfect for time spent away from the office.



This centre is a highly sophisticated and distinctive working environment in the city centre, with a sought-after M1 postcode. The redevelopment of the building has been substantial. Both inside and out this centre has been redesigned to compliment today's business needs in terms of flexibility and usability. Now, with a new identity, a new external look, a new reception, redesigned communal spaces and completely refurbished office space, this centre delivers a brand new experience for customers and visitors alike. But one thing remains constant - and that is this city centre location and proximity to the city's amenities and commuter interchanges. The centre is a great location for technology and media businesses will in future benefit from a gigabit of connectivity, with other new innovations for the building including a 'Business Lounge' for customers with great views across the city and the Peak District and access to the buildings high-speed fibre capabilities. A dedicated customer service team is on-site to manage the reception area and ensure the smooth operation of the building. Add to that secure cycle racks, on-site shower facilities and ample car parking options and this centre presents an ideal opportunity for your business to grow and move closer to Manchester's professional heartland.

### transport links

|                      |                             |
|----------------------|-----------------------------|
| <b>Underground</b>   | N/A                         |
| <b>Train Station</b> | St. Peters Square Metrolink |
| <b>Road Link</b>     | N/A                         |
| <b>Airport</b>       | City Airport Ltd            |

### Serviced Offices

---

- **Price** : Â£250 pcm
- **Min Price** : Â£250 pcm
- **Min Size** : 1 wkstns
- **Max Size** : 100 wkstns
- **Total Size** : 140 wkstns
- **Min Term** : 1 mnths
- **Max Term** : 12 mnths