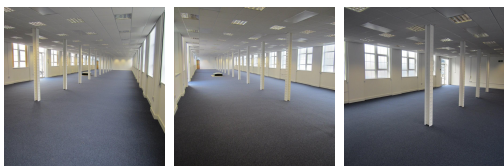


Serviced Office Space UK

25 Ashley Road

London N17 9LJ



The property is located on Ashley Road, within five minutes' walking distance to Tottenham Hale Retail Park and three minutes' walk to Tottenham Hale Underground Station (Victoria Line - 15 minutes' journey to Oxford Circus) and Tottenham Hale National Rail Station, providing excellent access to Stansted Airport and the City (12 minutes' journey to Liverpool Street). There is extremely good access from the North Circular Road and to Central London southwards, via the High Road A10, so the space is very well connected.

The available office space is 5,500 sq ft and is located on the ground floor of an elegant converted 3-storey Edwardian building. The premises consist of an open-plan office space, WCs and kitchen. The unit has potential to be configured to the client's own specification. The unit is accessed from its own entrance to the front street level (Ashley Road) and via its own further dedicated staff/car park entrance to the rear. Any interest in an office space for 1,500 sq ft space upwards will be considered. There is also one office of 200 sq ft available immediately also, and the spaces have 24-hour access.

transport links

Underground	Tottenham Hale Station
Train Station	King's Cross station
Road Link	N/A
Airport	London City Airport

Leased Spaces

- **Price** : Â£12 pcm
- **Min Price** : Â£12 pcm
- **Min Size** : 1 sq ft
- **Max Size** : 15 sq ft
- **Total Size** : 5500 sq ft
- **Min Term** : 6 mnths
- **Max Term** : 24 mnths