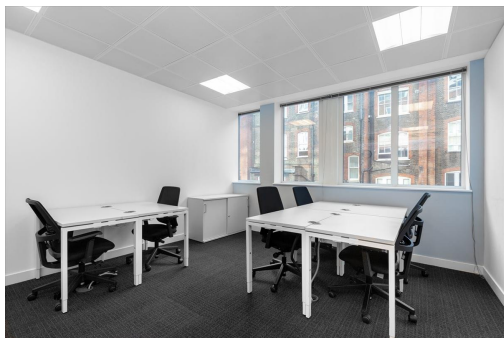


# Serviced Office Space UK

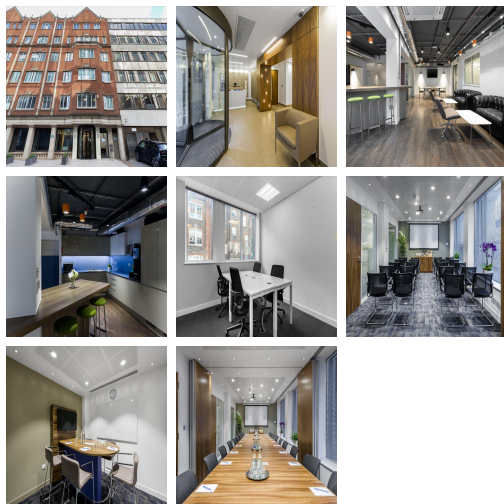
---

## 25 North Row

London W1K 6DJ



Situated in a prime location in London, surrounding the space are many facilities like eateries, where tenants can enjoy a lunch break or an evening of entertaining clients. Commuting to work is also easy. This centre is conveniently located and boasts excellent transport links as well. The surrounding area offers a wide range of eateries, and amenities like banks and retail shops, providing tenants with everything at their doorstep. The centre is accessible from almost every transport link, placing tenants and their teams in a well-connected and easily accessible location.



Spacious, fully-furnished offices offer a team somewhere to work comfortably, where members can move in and get started - no need for time wasted setting up various desks. The refined design and stunning landmark architecture are locally renowned as a commercially significant business establishment incorporating a neutral palette, international style, and industrial materials to create an elegant and fun workspace. This workspace offers a wide range of professional services and spectacular customer service to help the members with everything and anything. Tenants at this centre are very friendly and welcoming, providing a lovely atmosphere with lots of energy.

### transport links

<b>Underground</b>	Marble Arch
<b>Train Station</b>	Oxford Circus Underground Station
<b>Road Link</b>	N/A
<b>Airport</b>	London City Airport

### Virtual Office

---

- **Price** : Â£199 pcm
- **Min Price** : Â£199 pcm
- **Min Term** : 24 mnths
- **Max Term** : 999 mnths