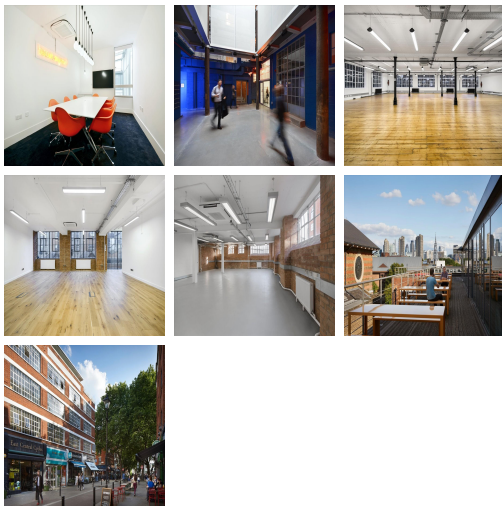


Serviced Office Space UK

London EC1R 0JH



Farringdon Station (Hammersmith & City, Metropolitan, Circle and National Rail lines) and Angel Underground (Northern Line) are approximately 600m to the south and north respectively. In addition, numerous bus routes service this area and facilitate easy access to the city and the West End. There are places to eat and drink in the immediate area including The Quality Chop House, The Exmouth Arms and The Bowler Pub and Kitchen. The area also has extensive hotel options, including the Crowne Plaza and a Travelodge.

This property incorporates sophisticated office and studio space to let in a desirable location on the corner of Exmouth Markets and Pine Street. Situated close to the intersection of Farringdon Road and Rosebery Avenue, this property benefits from close proximity to the restaurants, cafes and shops of the local Smithfield, Farringdon and Clerkenwell areas. There are a number of studio office suites available from 172-500 sq ft, suitable to a number of different business types. Amenities on-site include bike racks, air conditioning, breakout and lounge space, meeting rooms and access to kitchen areas.

transport links

Underground	Farringdon
Train Station	King's Cross station
Road Link	N/A
Airport	London City Airport

Leased Spaces

- **Price** : Â£6 pcm
- **Min Price** : Â£6 pcm
- **Min Size** : 3 sq ft
- **Max Size** : 90 sq ft
- **Total Size** : 14704 sq ft
- **Min Term** : 6 mnths
- **Max Term** : 24 mnths