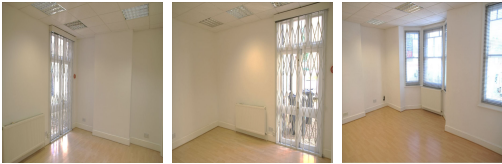


Serviced Office Space UK

Radlett WD7 7NN



The space is in the heart of Radlett town centre, located inside the M25, and just a short walk to the mainline railway station and has direct services into London. A few miles south of Saint Albans, neighbouring towns include Borehamwood and Watford, all offering a range of attractions and amenities. Within walking distance, there are eateries like Bannermans Dining, The Broadwick Restaurant and Bar and Costa Coffee. This centre is conveniently located and boasts excellent transport links as well.

Sleek, private office space is available that boosts productivity. This stylish contemporary building has an entrance that makes a statement as the first impression for guests. Spacious, fully-furnished offices offer a team somewhere to work comfortably, where members can move in and get started straight away - no need for time wasted setting up various desks. The refined design and stunning landmark architecture are locally renowned as a commercially significant business establishment incorporating a neutral palette, international style, and industrial materials to create an elegant and fun workspace.

transport links

Underground	Stanmore
Train Station	Watford Junction London Overground Station
Road Link	M1 Junc 5
Airport	London Luton Airport

Serviced Offices

- **Price** : Â£150 pcm
- **Min Price** : Â£150 pcm
- **Min Size** : 1 wkstns
- **Max Size** : 3 wkstns
- **Total Size** : 18 wkstns
- **Min Term** : 3 mnths
- **Max Term** : 12 mnths