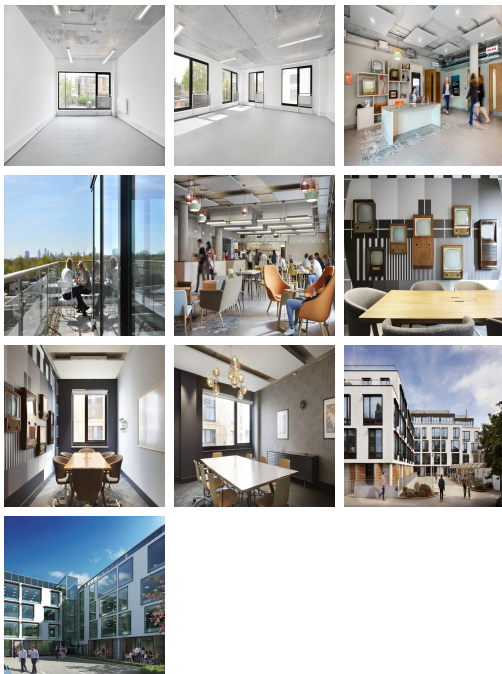


# Serviced Office Space UK

---

## London N5 2EF



These business premises are within easy distance of London's West End via the Victoria line from Highbury & Islington station, putting the best of London at your fingertips.

Located in the heart of leafy Highbury & Islington, just minutes from the bustling shops, bars and restaurants from Angel and Upper Street. The studios themselves boast City skyline views and many have access to their own balconies. The centre is a hub of activity, with onsite café, co-working lounge and an array of meeting rooms available for hire on an ad-hoc basis.

### transport links

<b>Underground</b>	Highbury & Islington
<b>Train Station</b>	Highbury & Islington Tube Station
<b>Road Link</b>	N/A
<b>Airport</b>	London City Airport

### Leased Spaces

---

- **Min Size** : 1 sq ft
- **Max Size** : 100 sq ft
- **Min Term** : 6 mnths
- **Max Term** : 24 mnths