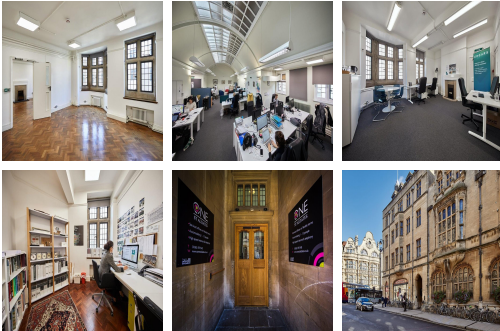


Serviced Office Space UK

1 St Aldate's

Oxford OX1 1DE



Ideally situated in the heart of Oxford, this property benefits from easy access to the City Centre and a short walk from Oxford Train Station and local and national bus services. The station provides direct, fast services into London, meaning that meeting in the Capital is no problem. A wealth of amenities are also available close by, including a wide choice of restaurants, shops and attractions within easy reach of the building, as well as hotels, which can be useful for any visitors to your office.

This centre provides flexible serviced office space with over 6,500 sq ft of light, open office space, and Oxford views. The centre can accommodate up to 18 companies with offices large enough for one to 15 people. Customers can benefit from a supportive community of start-up, high growth and entrepreneurial companies. Located in the heart of Oxford, the centre covers four floors located in the Town Hall's newly renovated North Wing. It benefits from its own 24-hour access, stunning architectural features from the 1930s, partnered with modern refurbishments, high-speed Internet and the latest IT services, bringing an elegant and modern feel to your office space. Customers benefit from an on-site coffee shop and access to the Gallery and Museum in the adjoining Town Hall.

transport links

| | |
|----------------------|----------------|
| Underground | N/A |
| Train Station | Oxford |
| Road Link | N/A |
| Airport | Oxford Airport |

Serviced Offices

- **Price** : Â£300 pcm
- **Min Price** : Â£300 pcm
- **Min Size** : 1 wkstns
- **Max Size** : 16 wkstns
- **Min Term** : 1 mnths