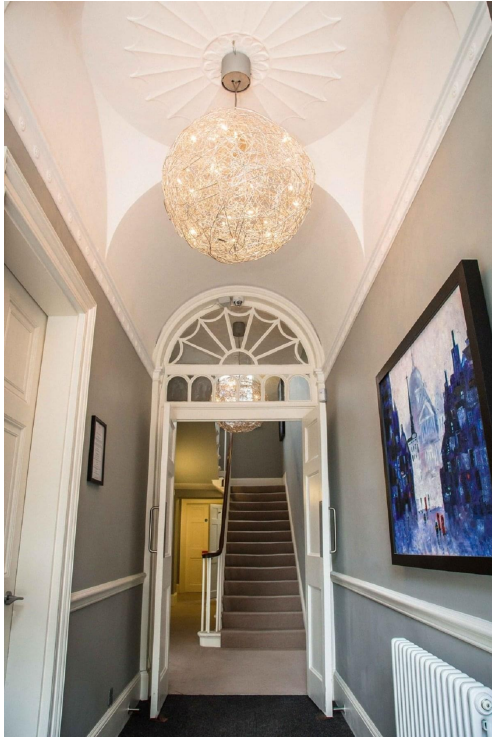


# Serviced Office Space UK

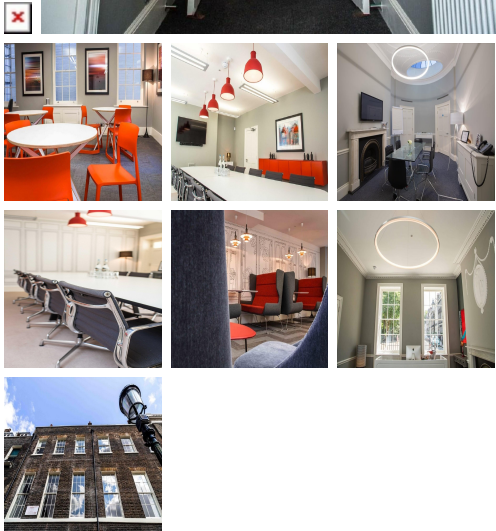
## 26/27 Bedford Square

### London WC1B 3HP



This centre is located in the heart of London, placing tenants and their teams in a well-connected and easily accessible location. This beautiful centre is just north of Tottenham Court Road and provides easy access to tube and major rail stations. The iconic British Museum is a stone's throw away and on the adjacent square. Such proximity means clients can make the most of the museum during lunch and after work. In addition, St. Pancras International is easily accessible, providing rail connections across Europe, including to Paris and Brussels.

This centre is a great space designed to meet the demands of any modern business. The beautifully designed office spaces empower teams and companies for growth with high ceilings and large windows that provide natural lighting. The centre offers several facilities, such as high-speed internet, professional meeting rooms, concierge services, mail handling, business-class printers, a beautiful kitchen, and professional-grade daily cleaning. There are lounges and breakout areas where tenants can take a break during a hectic workday. This building is a wonderland for all things digital - providing an ever-expanding hub of creatives with never-ending networking opportunities.



### transport links

<b>Underground</b>	Tottenham Court Road
<b>Train Station</b>	Euston Station
<b>Road Link</b>	N/A
<b>Airport</b>	London City Airport

### Serviced Offices

- **Price** : Â£600 pcm
- **Min Price** : Â£600 pcm
- **Min Size** : 2 wkstns
- **Max Size** : 12 wkstns
- **Total Size** : 127 wkstns
- **Min Term** : 3 mnths
- **Max Term** : 36 mnths