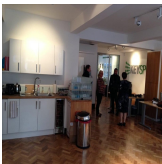
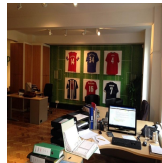
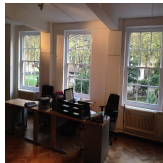
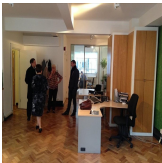


Serviced Office Space UK

London W1D 3QY



This business centre is on the southwest corner of Soho Square. The offices are in a prime position for easy access to London and Oxford Street, a short walk away. There is access to the London Underground network, making travel across the capital quick and easy, and there are also mainline rail stations nearby. The centre is accessible from almost every transport link, placing tenants and their teams in a well-connected and easily accessible location. With everything on the doorstep of this business centre, there are also many recreational activities around the corner.

This location is an exceptionally stylish and highly modern business centre installation providing a host of premium and innovative corporate facilities and professional services such as impressive reception services and lobby areas, modern fully furnished private office suites, state-of-the-art professional office equipment, a fast online network, and high-speed internet access. This ultra-modern business centre has amenities that are affordable and meaningful. This stylish contemporary building has an entrance that makes a statement as the first impression for guests. This state-of-the-art centre provides an excellent platform for any business to flourish with its cost-effective workplace solutions.

transport links

Underground	Tottenham Court Road
Train Station	Tottenham Court Road
Road Link	N/A
Airport	London City Airport

Serviced Offices

- **Price** : Â£700 pcm
- **Min Price** : Â£700 pcm
- **Min Size** : 15 wkstns
- **Max Size** : 20 wkstns
- **Total Size** : 90 wkstns
- **Min Term** : 3 mnths
- **Max Term** : 12 mnths