

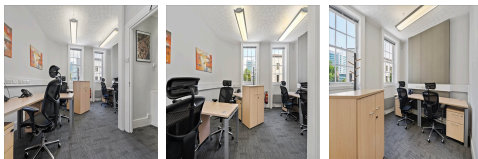
Serviced Office Space UK

45 Fitzroy Street

London W1T 6EB



A grade 2 listed building originally constructed around 1790, Silverstream House has been recently refurbished, respecting its traditional period character whilst incorporating infrastructure and security features required for the modern day business. Silverstream House, an excellent location, moments away from iconic hubs including Charlotte Street, Oxford Street and Tottenham Court Road. We have access to a vibrant and unparalleled array of great restaurants, bars, boutique shops, and leisure activities, making it a great place to work from. The office is well connected, with Warren Street, Great Portland Street, Tottenham Court Road and St Pancras International stations all being nearby.



Opened late May 2015, this seven-person fully managed office is available on flexible easy-in, easy-out terms in a newly refurbished Georgian period Grade II listed building. All IT and telecoms are already installed to enable you to move in and start up immediately. A licence fee is inclusive of rent, rates, energy, furniture, local/national/UK mobile telephone call charges, and cleaning. The building has 24 hour access and is fully secure. This office will give you the benefit of a managed office but without the feel of shared space. A quiet and private building in the heart of Fitzrovia with excellent connections throughout London.

transport links

Underground	Warren Street Station
Train Station	Euston Station
Road Link	N/A
Airport	N/A

Serviced Offices

- **Price** : Â£450 pcm
- **Min Price** : Â£450 pcm
- **Min Size** : 7 wkstns
- **Max Size** : 10 wkstns
- **Total Size** : 10 wkstns
- **Min Term** : 12 mnths
- **Max Term** : 60 mnths