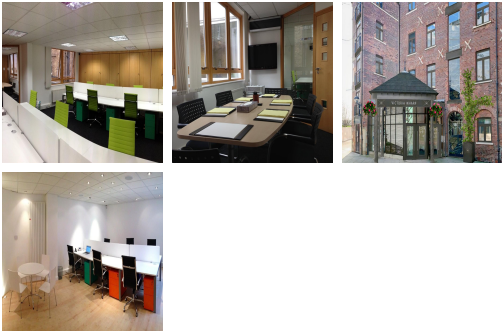


# Serviced Office Space UK

---

## London W1H 2HR



Marylebone is a quaint village in the heart of Central London. Baker Street and Marylebone High Street are both within a 5 minute walk. Excellent transport facilities too including Edgware Road, Marylebone and Baker Street stations. Places to eat are plentiful with hundreds of lunchtime restaurants nearby.

This centre is a mix of coworking office and private spaces based in the heart of Marylebone. With a modern interior and excellent facilities, the centre have space for up to 30 people over 2 floors in 2000 sq ft. The offices have the added benefit of modern kitchens, bathrooms and meeting room facilities. Ideal for a growing business in need of flexibility they can accommodate anything from sole traders to companies of 10 or more. The centre can offer flexible contracts starting from 1 month allowing the users a great permanent space in an enviable location. The centre is only a stones throw away from Baker Street station, Marylebone station & Edgware road, meaning great transport links on almost all lines.

### transport links

<b>Underground</b>	Marylebone
<b>Train Station</b>	Marylebone Underground Station
<b>Road Link</b>	N/A
<b>Airport</b>	London City Airport

### Coworking Spaces

---

- **Price** : Â£350 pcm
- **Min Price** : Â£350 pcm
- **Min Term** : 1 mnths
- **Max Term** : 24 mnths