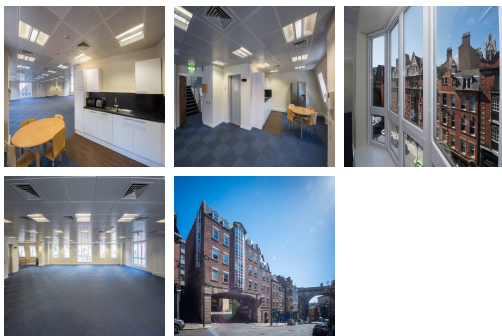


Serviced Office Space UK

Newcastle NE1 1PG



The workspace is situated in the heart of Newcastle, placing tenants and their teams in a well-connected and easily accessible location. This area has recently benefited from significant investment and is now a lively commercial area and popular leisure destination. There is great public transport close by, with both the Virgin East Coast Main Line Rail services and the Tyne and Wear Metro System within a 10-minute walk. The Quaylink Electric Bus Service passes the building, connecting Dean Court with Central Station, Gateshead, Haymarket and the Quayside area.

This centre is in the heart of Newcastle, between the vibrant Quayside, city centre and impressive Grey Street in one of the city's most sought-after commercial districts. The building provides quality, spacious, fully refurbished, air-conditioned accommodation giving occupiers a light, secure, comfortable and convenient workplace in the heart of Newcastle city centre. The building is a modern and high-specification accommodation with an open-plan office layout and a VRV heating and cooling system. There is an energy-efficient heat recovery VRV system capable of simultaneous heating and cooling as well as high-performance perforated metal acoustic suspended ceilings with LG3-compliant recessed lighting, in the building.

transport links

| | |
|----------------------|------------------------|
| Underground | Central Station |
| Train Station | Manors Railway Station |
| Road Link | N/A |
| Airport | Newcastle Airport |

Leased Spaces

- **Min Size** : 8 sq ft
- **Total Size** : 2037 sq ft
- **Min Term** : 12 mnths
- **Max Term** : 24 mnths