

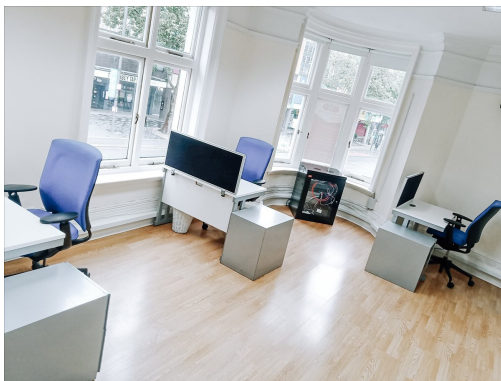
Serviced Office Space UK

415 High Street

London E15 4QZ



This centre is accessible using various means - a minute's walk from the train station, a minute's walk from the Tube station, and a minute's walk from the Bus stop. The centre is close to London Underground station and Stratford High Street DLR station. The workspace also has easy access to multiple bus routes - Bus 86, 25, and 69, and a bus garage, five minutes from the workspace. In the immediate vicinity, there is everything the city lives in - restaurants, cafes, shopping centres, and hotels.



This building is a wonderland for all things digital – providing an ever-expanding hub of creatives with never-ending networking opportunities. The space features best-in-class services and amenities designed for the most productive workday every day. It offers a wealth of unique features and facilities to benefit the business. Facilities at this centre include fully furnished offices with high-speed internet, parking space, meeting space, professional-grade daily cleaning services, IT support and telecom services, kitchen facilities, and much more. The centre is accessible 24 hours daily, enabling the clients to work flexibly.

transport links

Underground	Stratford
Train Station	Liverpool Street Station
Road Link	N/A
Airport	London City Airport

Coworking Spaces

- **Price** : Â£200 pcm
- **Min Price** : Â£200 pcm
- **Total Size** : 23 wkstns
- **Min Term** : 1 mnths
- **Max Term** : 12 mnths