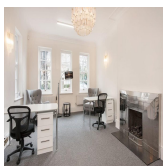
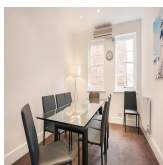
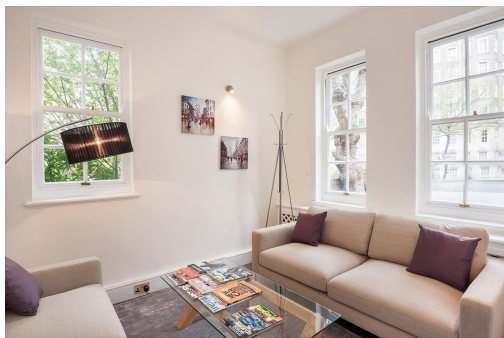


# Serviced Office Space UK

---

## 45 Circus Road

London NW8 9JH



The workspace lies in the heart of London. Members can arrive at the underground stations of Marylebone and Victoria after a few miles. The crafted workplace carries the reputation of being the top cultural hub for upcoming professionals and small-scale industries. The primary location of the workplace is a prominent landmark making it convenient for the clients to access the local transport linkages. Some airports neighbouring the workplace are London City Airport, London Biggin Hill Airport and Heathrow Airport.

The workspace offers private offices that members can personalize. The offices are intentionally designed for clients to do their best work, offering different space types that enhance productivity and collaboration. Superfast internet, heating, water, lighting and electricity are all covered in the rates as well as service charges and business rates. This strange mix of old and new, traditional and modern, is what makes the workplace seem surreal. Private offices can be personalized to taste while an all-inclusive package gives start-ups and entrepreneurs the ability to focus on their hustle, knowing that quality office space is taken care of.

### transport links

|                      |                                |
|----------------------|--------------------------------|
| <b>Underground</b>   | St. John's Wood                |
| <b>Train Station</b> | Marylebone Underground Station |
| <b>Road Link</b>     | N/A                            |
| <b>Airport</b>       | LivingWell Health Club         |

### Serviced Offices

---

- **Price** : Â£580 pcm
- **Min Price** : Â£580 pcm
- **Min Size** : 1 wkstns
- **Max Size** : 22 wkstns
- **Total Size** : 22 wkstns
- **Min Term** : 3 mnths
- **Max Term** : 12 mnths