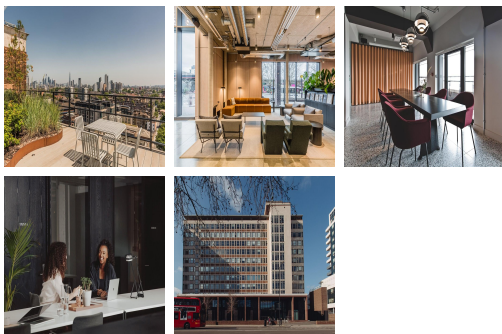
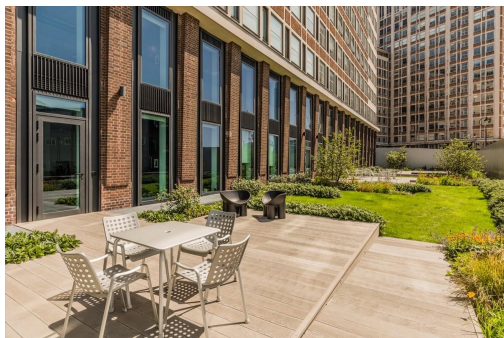


Serviced Office Space UK

92 Albert Embankment

London SE1 7TP



Situated in Central London, this space is ideally placed with bars, restaurants and cafes lining the nearby streets in the Vauxhall area. With neighbours including MI6, Comic Relief and Macmillian Cancer Support, you know your business is going to be set in a fantastic commercial district. If you prefer to stay close to the office between meetings, the centre's 13th floor rooftop offers breathtaking views across Central London. Vauxhall underground station is under 10-minutes walk away, delivering direct access to the rest of the city and beyond.

This centre - an eleven-storey, 1960's building, fully refurbished in partnership with architects Universal Design - makes up 120,000 square feet of flexible offices, meeting rooms, event space, lounge space and co-working space in the heart of London. This space comes complete with facilities including; a members' bar for relaxing, gym for working out, on-site cafe, plus a kitchen and dining area. This amazing space is available at affordable prices and on flexible terms to help accommodate all your business needs. 24-hour access means that flexible working hours are possible at this location.

transport links

Underground	Vauxhall
Train Station	London Bridge Underground Station
Road Link	N/A
Airport	London City Airport

Coworking Spaces

- **Price** : Â£425 pcm
- **Min Price** : Â£425 pcm
- **Total Size** : 1 wkstns
- **Min Term** : 3 mnths
- **Max Term** : 36 mnths