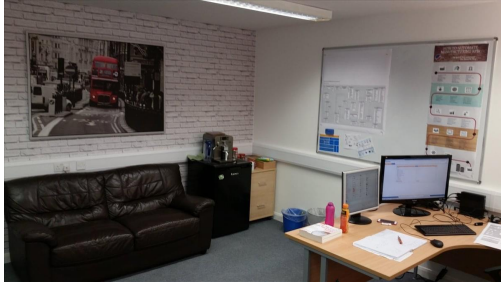


Serviced Office Space UK

Broadley Park Road

Roborough PL6 7EZ



This office is a modern industrial development located to the north of Plymouth, on the Roborough Industrial Estate, on the edge of Dartmoor. It comprises of a series of self contained units for sale or rent (with B1, B2 & B8 T CPA Classes use) as well as a number of offices to rent. The building is minutes away from the A386 which can take you directly into Plymouth city centre that is six miles away. Ample parking spaces make this centre easily accessible by car. There is a bus stop 16-minutes away on foot.

These offices are set on a modern industrial estate in a scenic area. They are available unfurnished and include all utilities: heating, water, electricity and building insurance. Tenants will have 24-hours access to the building, 7 days a week, perfect for those who don't work the regular working hours. The building is fully secured and there are plenty of free car parking spaces. There are offices available for 1 or 2 desks up to an office with space for 4 or 5 desks. There are many benefits to setting up an office for your business at this picturesque space, these include a range of business support services available at very competitive rates from bookkeeping to PR, with the option for meeting rooms which are available.

transport links

Underground	N/A
Train Station	Bere Ferrers
Road Link	N/A
Airport	Mylesmoor travel

Serviced Offices

- **Price** : Â£70 pcm
- **Min Price** : Â£70 pcm
- **Min Size** : 1 wkstns
- **Max Size** : 5 wkstns
- **Min Term** : 6 mnths