

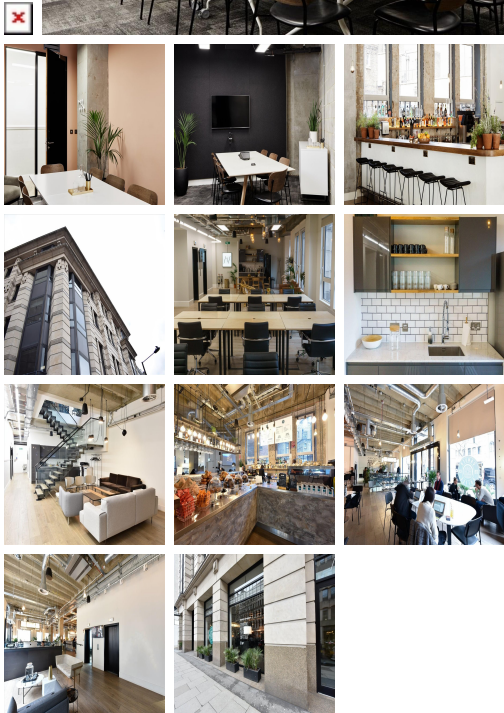
Serviced Office Space UK

LABS Hogarth House

London WC1V 6PX



Located just one minute's walk from Holborn station, providing access to the London Underground network, this unrivalled location offers easy access to both central London and the City. The surrounding area offers a wide range of eateries, and amenities like banks and retail shops, providing tenants with everything at their doorstep. The centre is accessible from almost every transport link, placing tenants and their teams in a well-connected and easily accessible location. Commuting to work is also easy.



The refined design and stunning landmark architecture are locally renowned as a commercially significant business establishment incorporating a neutral palette, international style, and industrial materials to create an elegant and fun workspace. This stylish contemporary building has an entrance that makes a statement as the first impression for guests. This amenity-rich complex is the perfect location for any business seeking a modern workspace to thrive. Spacious, fully-furnished offices offer a team somewhere to work comfortably, where members can move in and get started - no need for time wasted setting up various desks.

transport links

Underground	Holborn
Train Station	Tottenham Court Road
Road Link	N/A
Airport	London City Airport

Coworking Spaces

- **Price** : Â£299 pcm
- **Min Price** : Â£299 pcm
- **Total Size** : 20 wkstns
- **Min Term** : 1 mnths
- **Max Term** : 1 mnths