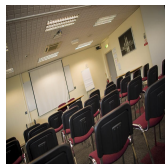
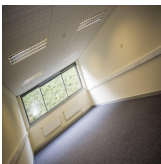
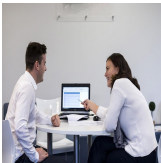


Serviced Office Space UK

Snydale Road

Cudworth S72 8RP



This centre is located just over three miles from Barnsley town centre and is in close proximity to the Dorothy Hyman Stadium. Cudworth town centre itself is vibrant and busy and is just a five minute walk from the centre. Crammed full of local shops cafes and supermarkets it provides an ideal escape from a busy day in the office. There are plenty of bus stops along the way meaning that commuting to the space is simple and easy. Access to the A1M is quick and easy via recently built dual carriageways.

This centre provider has over 28 years experience of businesses making a move to their own office space to accommodate a growing workforce. The office units available range between 90-500 sq ft, allowing you to operate in comfortable and secure surrounding. This centre aims to make the transition as easy as possible, the onsite management team are here to help. There is ample car parking for tenants, their staff, visitors or meeting delegates, with over 300 parking spaces available. The 34 modern flexible units can be easily adapted to suit individual requirements and are available on short 'easy-in, easy-out' terms. The accommodation allows for expansion without the need to relocate during early stages of growth and development.

transport links

Underground	N/A
Train Station	Barnsley
Road Link	N/A
Airport	Dewsbury Cars 24/7 Taxi Service

Virtual Office
