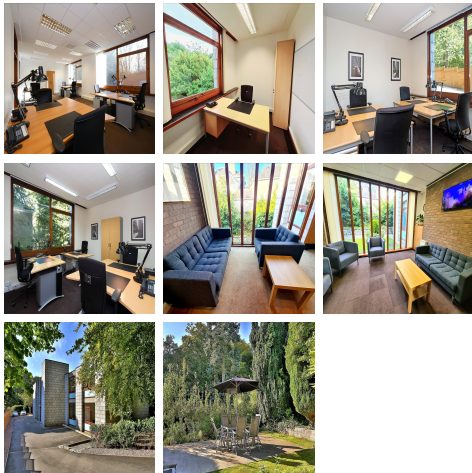


# Serviced Office Space UK

## 23 Rubislaw Den North

Aberdeen AB15 4AL



The Rubislaw Den North location offers a secluded and private setting for businesses, housed in a mid-century modern two-storey building known for its brutalist architecture. With private gardens and views of trees and nature, it provides a serene atmosphere for work. Services include furnished private offices, therapy rooms, mail handling, and business facilities like a waiting room, business lounge, shower room and kitchen. Access is available 24/7 via fob, with on-site parking and bike racks provided. The centre is conveniently located near bus routes and offers access to meeting room at the Queen's Gardens location.

Rubislaw Den North offers a secluded and private setting for businesses, housed in a mid-century modern two-storey building known for its brutalist architecture. Services include mail handling and postage sending service, complemented by facilities such as a visitor waiting room, business lounge, kitchen and bath/shower facilities. All clients benefit from 24/7 fob access, while client's visitor access is managed remotely Monday to Friday between 9am to 5pm. Free private on-site parking is provided for clients and visitors. Additional amenities include private gardens with outdoor furniture and secure bike racks. There is access to meeting rooms at Queen's Gardens and secretarial assistance, including services such as reception telephone answering and printing handled by the remote reception team.

### transport links

<b>Underground</b>	N/A
<b>Train Station</b>	Aberdeen
<b>Road Link</b>	A92
<b>Airport</b>	Aberdeen Airport

### Serviced Offices

- **Price** : Â£189 pcm
- **Min Price** : Â£189 pcm
- **Min Size** : 1 wkstns
- **Max Size** : 8 wkstns
- **Total Size** : 47 wkstns
- **Min Term** : 6 mnths
- **Max Term** : 36 mnths