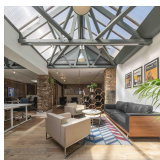
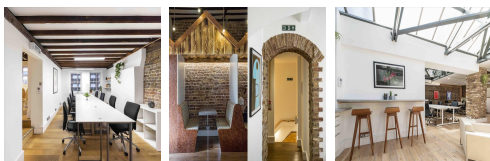
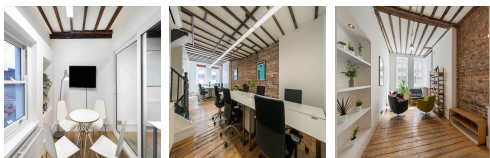
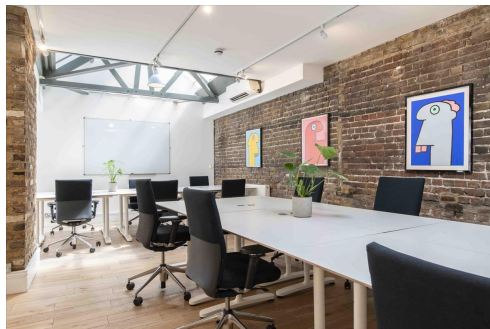


# Serviced Office Space UK

## 189-190 Shoreditch High Street

London E1 6HU



The office is located in the centre of dynamic Shoreditch, surrounded by independent coffee shops and restaurants, and just a stone's throw away from Boxpark, Ace Hotel and Shoreditch House. There are excellent public transport links in the area. Shoreditch High Street Overground is a 3-minute walk, Liverpool Street Station is an 8-minute walk, and Old Street is a 10-minute walk. The centre has a wide range of local coffee shops and restaurants in the area, great for a morning coffee or a meal. With everything on the doorstep of this business centre, there are also many recreational activities around the corner.

This excellent building is a newly refurbished, media-style office space. It is wired with the newest internet technology and furnished with bespoke furniture. This workspace has a communal kitchen, break-out area, shower and toilets. The building has a magnificent original Victorian spiral staircase, floorboards and exposed bricks. The office also contains a private break-out and kitchen, perfect for informal gatherings or simply making some tea or coffee for the office. Spacious, fully-furnished offices offer a team somewhere to work comfortably, where members can move in and get started - no need for time wasted setting up various desks.

### transport links

|                      |                                   |
|----------------------|-----------------------------------|
| <b>Underground</b>   | Old Street                        |
| <b>Train Station</b> | London Bridge Underground Station |
| <b>Road Link</b>     | N/A                               |
| <b>Airport</b>       | London City Airport               |

### Serviced Offices

- **Price** : Â£450 pcm
- **Min Price** : Â£450 pcm
- **Min Size** : 1 wkstns
- **Max Size** : 1 wkstns
- **Total Size** : 1 wkstns
- **Min Term** : 1 mnths
- **Max Term** : 12 mnths