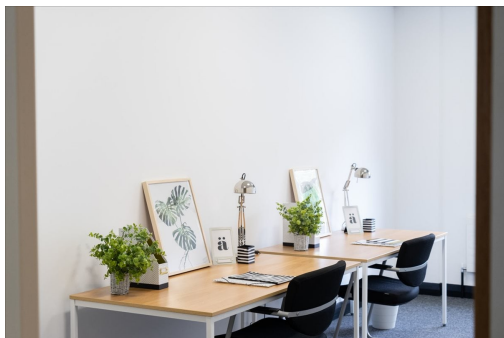


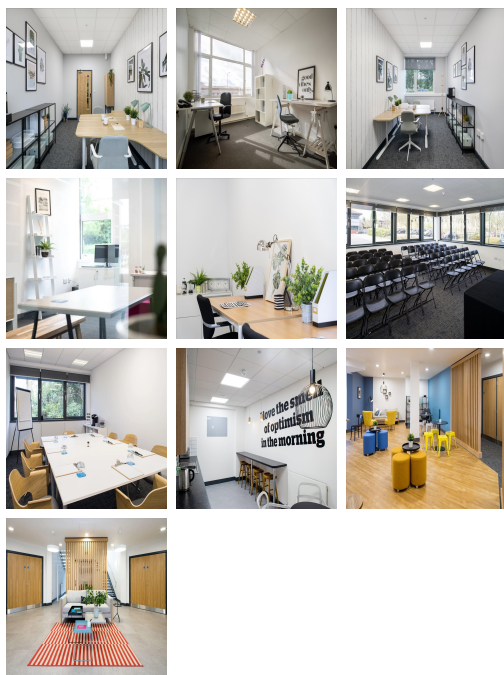
Serviced Office Space UK

Great Park Road

Bristol BS32 4QL



The centre is just 15 minutes from Bristol and the bright lights of the city centre. This centre is next to the M4/M5 interchange and just 10 minutes away from Parkway Railway Station, which offers services to London Paddington. The Mall and Cribbs Causeway are five minutes away, and Bristol City Centre is 15 minutes away. There are shops and pubs within walking distance, including a Toby Carvery, perfect for a meal after work. Guests can make use of the nearby DoubleTree by Hilton Hotel. Fantastic transport links are available due to the central location of this space.



This striking contemporary office building provides a range of office spaces suitable for businesses of all sizes and requirements. The beautifully designed office spaces empower teams and companies for growth, with high ceilings and large windows that provide natural lighting. The building offers flexible license agreements with no hidden charges, boasting 24-hour access, free car parking, a communal break-out area, meeting rooms, fully equipped kitchens and high-speed internet access. The centre is well-equipped for any business to call home. This building is a wonderland for all things digital – providing an ever-expanding hub of creatives with never-ending networking opportunities.

transport links

Underground	N/A
Train Station	Patchway
Road Link	N/A
Airport	Bristol Airport

Virtual Office

- **Price** : Â£50 pcm
- **Min Price** : Â£50 pcm
- **Min Term** : 1 mnths
- **Max Term** : 1 mnths