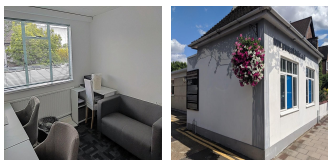
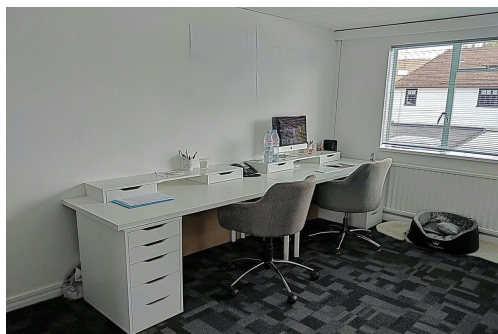


# Serviced Office Space UK

## London W4 3HR



The area has a lovely local and friendly feeling. Several cafes, bars and shops within five-minutes walk. Excellent transport links. Chiswick main line station is opposite the offices with direct links to Waterloo, Vauxhall and Reading . Two London underground lines are located close by and the complex is also close to Chiswick High Street. The M4 is close to the complex but it still retains a leafy, park like quality. London's many attractions are within easy reach, perfect for time spent away from the office.

A selection of self-contained offices surrounding a central courtyard. The offices benefit from excellent natural light and are fitted to a high standard. It's affordable, unique and offers free on site parking as well as street parking. The complex has a local, friendly feel with local shops, cafes and bars a short walk away. All offices have excellent transport links, located opposite Chiswick main line station with direct connections to Waterloo. A short distance from London Underground stations and a five minute drive to the M4. There are a variety of offices that range in size from 150 sq ft to 1060 sq ft. It has a very modern fitting to it, offering spacious rooms and urban views. A large, newly refurbished kitchen can keep lunch time queuing to a minimum and reduce work day stress. Several facilities are also available, access to printing , copying and scanning are all supported by welcoming and helpful staff.

### transport links

<b>Underground</b>	Gunnersbury
<b>Train Station</b>	Victoria Station
<b>Road Link</b>	N/A
<b>Airport</b>	Heathrow Airport

### Leased Spaces

- **Price** : Â£4 pcm
- **Min Price** : Â£4 pcm
- **Min Size** : 2 sq ft
- **Max Size** : 3 sq ft
- **Total Size** : 150 sq ft
- **Min Term** : 6 mnths