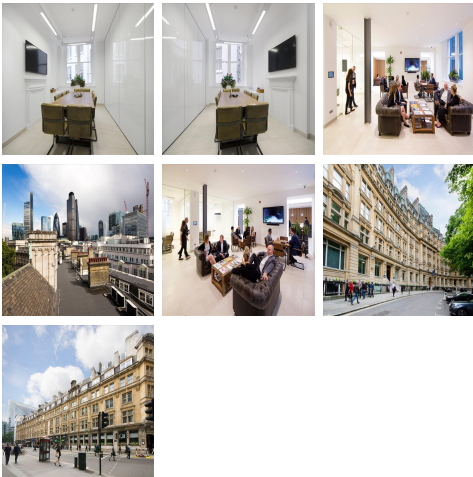


Serviced Office Space UK

London EC2M 5SQ



Located in Finsbury Circus, this centre benefits from excellent transport links and being in the vicinity of some of London's cultural highlights. There are a raft of public transport options available to tenants, with Moorgate tube station just 50 metres away; Liverpool Street station 3-minutes walk away; and Bank tube station just ten-minutes walk. The centre is also in close proximity to some wonderful attractions. The Barbican Centre is just 10-minutes walk away, and within 20-minutes walk London Bridge, Shoreditch and Brick Lane are all reachable.

Housed in a stunning Grade II listed building, this centre is based in the heart of Finsbury Circus. The centre is comprised of eight floors, with available space in office or studio format ranging from 102-5049 sqft. With lightwells running throughout the building, there is an abundance of natural light flooding the space, making for an atmosphere conducive to creativity and productivity. The pièce de résistance of the centre is the wonderful roof terrace, offering panoramic views across the city's skyline. The centre comes equipped with dedicated meeting rooms and a staffed reception that will be happy to help with any queries you may have. The centre is also one of less than 50 others within London that has been certified Gold by WiredScore, meaning it has one of the best digital infrastructure's around - essential in this day and age - and access to business grade fibre broadband. In this regard, the centre is on a par with London landmarks such as City Hall.

transport links

Underground	Bank
Train Station	Liverpool Street Station
Road Link	N/A
Airport	London City Airport

Leased Spaces

- **Price** : £6 pcm
- **Min Price** : £6 pcm
- **Min Size** : 3 sq ft
- **Max Size** : 20 sq ft
- **Total Size** : 21740 sq ft
- **Min Term** : 24 mnths
- **Max Term** : 24 mnths