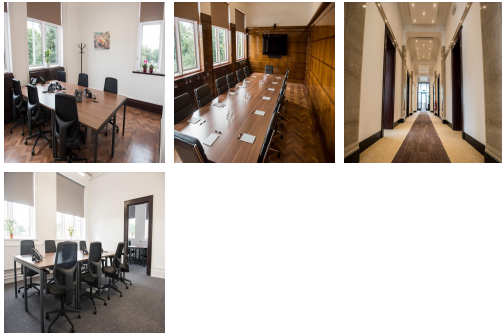


Serviced Office Space UK

90 Watery Lane

Preston (Lancashire) PR2 1AU



The centre is located on Watery Lane opposite Preston and Riversway. The Preston is a popular and developing place for business, leisure, entertainment and shopping. Once Europe's largest single basin, the area has magnificently enhanced with the new multi-million pound Ribble Link, the first canal to be built in a century, connecting the centre to the Lancaster Canal and the national waterways network. Preston's train station is located just a mile away for those users of rail travel. The centre is easily accessible for all those professionals commuting from the broader parts of the region.

The centre promises to be a hub for businesses mainly focused on the creative and technological industries. In this multi-occupancy building, companies and individuals can all share in the productive atmosphere of the space. From start-ups looking to set down the first root to established businesses looking for beautiful offices, the centre provides a professional space enabling tenants to network with other creative companies. With a shared kitchen and café space, the centre gives options to the tenants for daily meals whilst also crafting an organic, social environment. Additional amenities include shower facilities and dedicated meeting rooms to host business meetings.

transport links

Underground	N/A
Train Station	Preston Station
Road Link	N/A
Airport	Blackpool Airport

Virtual Office

- **Price** : £25 pcm
- **Min Price** : £25 pcm
- **Min Term** : 1 mnths
- **Max Term** : 12 mnths