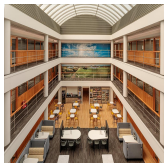
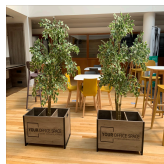
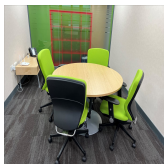


Serviced Office Space UK

Gloucester House

Milton Keynes MK9 2AH



This workspace is in the heart of the business district of the new city of Milton Keynes. This building has excellent road and rail transport links for easy access. A 15-minute walk from the building brings clients to Milton Keynes Central railway station, with the M1 main central motorway under a 10-minute drive. This centre is conveniently located and boasts excellent transport links as well. The surrounding area offers a wide range of eateries, and amenities like banks and retail shops, providing tenants with everything at their doorstep.

Gloucester House is situated on Silbury Boulevard in the heart of the Central Business District, close to shops and restaurants, within walking distance of the bus and train stations. The building offers a stunning and impressive sense of arrival rarely found in the New City. The offices, meeting rooms and break-out areas are much larger than you will find in other serviced offices, offering a sense of space and calm in which to run your business or event. Additionally, the on-site team, dedicated to making your stay productive and stress free, are the stand out feature of this business centre.

transport links

Underground	N/A
Train Station	Milton Keynes Central
Road Link	N/A
Airport	London Luton Airport

Virtual Office

- **Price** : Â£50 pcm
- **Min Price** : Â£50 pcm
- **Min Term** : 3 mnths
- **Max Term** : 60 mnths