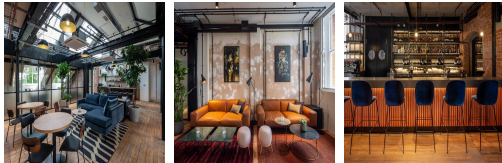


Serviced Office Space UK

London SE1 1DN



The work centre is within easy reach of excellent public transport connections. Borough Station is a six-minute walk away, whereas Elephant and Castle is a seven-minute walk away. There are many fantastic bus services within walking distance. Due to its fantastic location, there are numerous restaurants, cafes, bars and shops on the doorstep of the office space. King's Cross can be reached in under 25 minutes, providing direct and regular services nationwide. This centre is the ideal setting for those professionals commuting from even the furthest reaches of the wider region.

This workspace in a prime area of Central London offers outstanding office accommodation. The building is home to four floors of creative collaboration, and the workspace is above a members club. The high-quality office space has a wealth of fantastic amenities. It includes - private phone booths, luxury break-out spaces, business advice and support. The centre is accessible 24 hours daily, enabling the clients to work flexibly. The office building also has spacious meeting rooms available to book. This building is a wonderland for all things digital - providing an ever-expanding hub of creatives with never-ending networking opportunities.

transport links

Underground	Borough Station
Train Station	London Bridge Underground Station
Road Link	N/A
Airport	London City Airport

Coworking Spaces

- **Price** : Â£450 pcm
- **Min Price** : Â£450 pcm
- **Total Size** : 7 wkstns
- **Min Term** : 1 mnths
- **Max Term** : 12 mnths