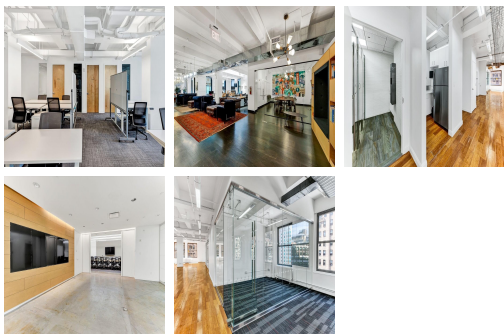
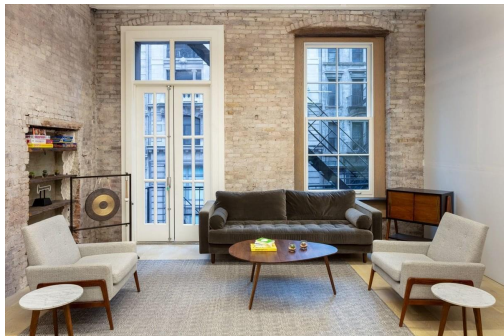


# Serviced Office Space UK

---

## 7 Soho Square

London W1D 3QE



Located on Soho Square, moments from the picturesque Soho Square Gardens, this centre benefits from great transport links and nearby amenities. The building is just a four-minute walk from Tottenham Court Road station, offering access to the Central and Northern tube lines. Oxford Circus is a seven-minute walk, providing access to the Bakerloo, Central and Victoria lines. When at last the day is done, there's an endless amount of dining and entertainment options nearby. Soho Theatre is just round the corner, The British Museum is less than a ten-minute walk and there are a huge range of restaurants and bars in the area.

Fantastic office space across the fifth floor of this art-deco building is perfect for larger businesses who want a space tailored to their brand and a flexible contract. The 7784 square feet of space can be customised to meet your exact requirements, ensuring you achieve your dream office. The opportunity to incorporate your brand identity into your work environment is an exciting opportunity. The rental price is inclusive of the design, build and servicing of the office. High-speed internet, beverages and utilities are all conveniently included in the rent. Custom IT infrastructure, furniture and even artwork can be implemented throughout this full floor office.

### transport links

<b>Underground</b>	Tottenham Court Road
<b>Train Station</b>	Euston Station
<b>Road Link</b>	N/A
<b>Airport</b>	London City Airport

### Serviced Offices

---

- **Min Term** : 6 mnths