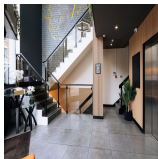
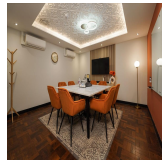
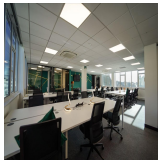
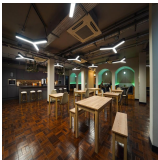


Serviced Office Space UK

57 Southwark Street

London SE1 1RU



The workspace is situated in the heart of London, placing tenants and their teams in a well-connected and easily accessible location. The centre is located in a diverse and commercially significant city area. Within walking distance of London Bridge, Southwark, Borough, and Waterloo stations, it's also a commuter's dream. London City Airport and London Biggin Hill Airport are the closest airports to the centre. This centre is the ideal setting for those professionals commuting from even the furthest reaches of the wider region.

This centre is ideally situated in the bustling, trendy district around London Bridge, a stone's throw away from the ever-popular Borough Market. It has an eclectic, stylish and boutique feel with unique geometric lighting. There are lounges and breakout areas where tenants can take a break during a hectic workday. There are meeting rooms aplenty, chat booths and stunning city views of iconic London landmarks like The Shard. This vibrant, innovative space benefits even further from the on-site staff who deliver world-class hospitality, looking after the needs of every client. The office space has been built with the utmost sophistication so clients can work here in a pleasant, refreshing mood.

transport links

Underground	Borough Station
Train Station	London Bridge Underground Station
Road Link	N/A
Airport	London City Airport

Serviced Offices

- **Price** : Â£500 pcm
- **Min Price** : Â£500 pcm
- **Min Size** : 3 wkstns
- **Max Size** : 79 wkstns
- **Total Size** : 217 wkstns
- **Min Term** : 1 mnths
- **Max Term** : 36 mnths