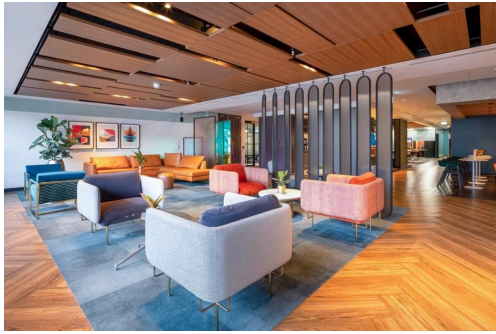


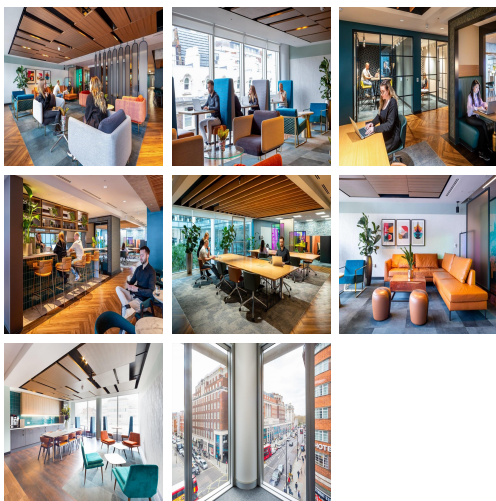
Serviced Office Space UK

2 Portman Street

London W1H 6DU



This workspace is in a highly sought-after area of London, in the heart of the West End. It has fantastic transport links, Marble Arch Underground Station is a short three-minute walk, Bond Street Underground Station is only a six-minute walk, and Baker Street Underground is a quick 15-minute walk. Also located nearby are Marylebone and Paddington mainline Rail Stations, providing direct links to other major cities. The surrounding area offers a wide range of eateries, and amenities like banks and retail shops, providing tenants with everything at their doorstep.



This workspace offers two new floors on a brand-new building. The two floors create around 600 workstations for companies to grow their business. The third floor has 240 workstations, and the fourth offers 319 workstations. Both have access to Club Space, which has informal meeting rooms, collaborative spaces and private phone booths. This open plan and spacious workspace have full-height windows allowing for floods of natural light to enter the work area. The building has excellent facilities, including eight showers and 60 bike racks. This amenity-rich complex is the perfect location for any business seeking a modern workspace to thrive.

transport links

Underground	Marble Arch
Train Station	Oxford Circus Underground Station
Road Link	N/A
Airport	London City Airport

Serviced Offices

- **Price** : Â£625 pcm
- **Min Price** : Â£625 pcm
- **Min Size** : 2 wkstns
- **Max Size** : 58 wkstns
- **Total Size** : 582 wkstns
- **Min Term** : 3 mnths
- **Max Term** : 12 mnths