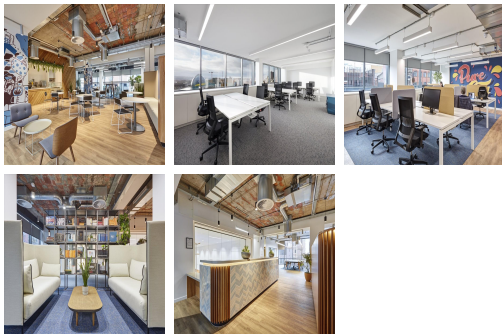
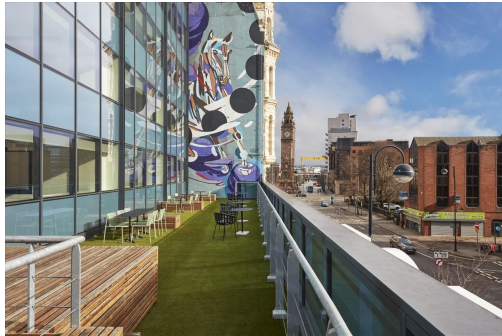


# Serviced Office Space UK

---

## 46-60 High Street

### Belfast BT1 2BE



The building is situated a ten-minute drive from George Best Airport. Belfast International Airport is a comfortable 30-minute drive away. The centre is also a ten-minute walk to either Central or Great Victoria Street Transport Hub, making the work centre a very accessible place for commuters. The business centre is linked to the UK National Cycle Network, and the Belfast Bike Share Scheme Docking Station is just one minute away. Situated on the vibrant high street of Belfast, there are many places to shop, eat and drink near the workspace.

This work centre is located in a prime position on Belfast's vibrant high street. The business centre occupies five floors of the recently refurbished and stunning glass-front building. Based within the buzzing centre of the city's Cathedral Quarter, an extensive range of the city's best shops, bars and eateries are all within walking distance—well connected with all major transport. With amenities on-site, such as a roof terrace on level two, a large club lounge, and an in-house cafe with reception staff to greet clients, this workspace is the perfect place to host business meetings and events.

### transport links

<b>Underground</b>	N/A
<b>Train Station</b>	Central Station
<b>Road Link</b>	N/A
<b>Airport</b>	George Best Belfast City Airport

### Coworking Spaces

---

- **Price** : Â£250 pcm
  - **Min Price** : Â£250 pcm
  - **Total Size** : 32 wkstns
  - **Min Term** : 1 mnths
  - **Max Term** : 12 mnths
-