

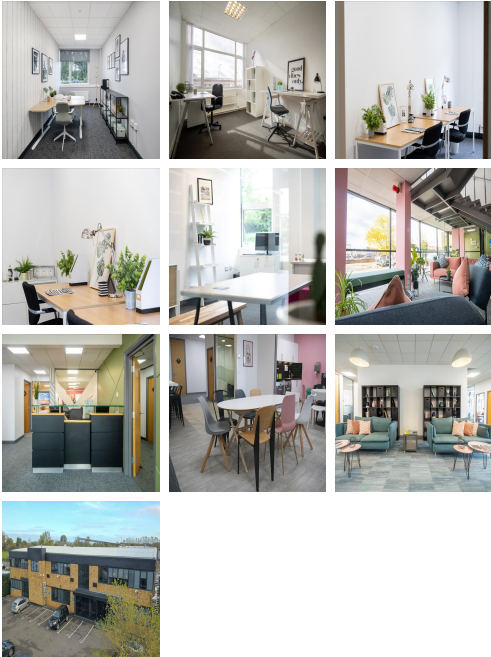
# Serviced Office Space UK

## 1 Delta Way

### Egham TW20 8RX



The workspace is situated in the heart of Egham, placing tenants and their teams in a well-connected and easily accessible location. Just 19 miles out of Central London, tenants will find excellent transport links and a range of local amenities. For those who drive, the M25, M3, and M4 motorways are just a few minutes away - ideal for the daily commute. Egham railway station is just a six-minute drive from the centre and is served by South Western Railway, facilitating easy and direct access to London Waterloo.



This centre is a great space that meets the demands of any modern business. This recently refurbished centre provides an excellent platform for any business to flourish with its cost-effective workplace solutions. This business centre has fully furnished offices with high-speed internet, parking space, meeting space, professional-grade daily cleaning services, IT support and telecom services. The workspace provides an eye-pleasing atmosphere where clients can work more flexibly. This business centre is the leading workspace provider with multiple office solutions for every business. This building is a wonderland for all things digital - providing an ever-expanding hub of creatives with never-ending networking opportunities.

### transport links

<b>Underground</b>	Heathrow Terminal 5
<b>Train Station</b>	Staines
<b>Road Link</b>	N/A
<b>Airport</b>	Heathrow Airport

### Sublet Office Spaces

- **Price** : Â£458 pcm
- **Min Price** : Â£458 pcm
- **Min Size** : 2 wkstns
- **Max Size** : 89 wkstns
- **Total Size** : 263 wkstns
- **Min Term** : 12 mnths
- **Max Term** : 120 mnths